



AGAINST

By Christopher Shinn



147 Tooley St,
London SE1 2HZ

Productions by our Acting, Audio Production, Costume Production, Creative Lighting Control, Design for Theatre & Performance, Lighting Design, Scenic Arts, Stage & Events Management students.

AGAINST

By Christopher Shinn

Directed by **Hanna Berrigan**

Scenic & Costume Designer **Cecilia Trono**

Lighting Designer **Edgar Bermon**

Sound Designer **Ryan Perry**

"We can make our minds so like still water that beings gather about us that they may see, it may be, their own images, and so live for a moment with a clearer, perhaps even with a fiercer life because of our quiet."

William Butler Yeats, "Earth, Fire and Water,"
The Celtic Twilight, 1893

Against, staged at the Almeida in 2017, asks: "What if?"

Atheist Luke, an aerospace billionaire, believes God has spoken to him. As instructed, he travels to *where there's violence*. Whether we believe God has spoken to Luke, or, in fact, whether we believe there is a God at all, is immaterial. What the play examines is *what might happen* if someone like Luke were to respond to violence in the way that he does; by encouraging reflection.

Despite Luke's position at the centre of the piece, it is the action around him which drives the drama. His mission is inspiring to many, but others are moved to anger by his mere presence. Our mission, in rehearsal, has been to develop an understanding for all the voices in the play, by seeing the world from multiple standpoints. I've been impressed by the students' engagement, emotional intelligence, and open-mindedness.

Back in 2006, I was fortunate enough to work as an assistant on another Christopher Shinn play, *Dying City*. Working on the piece and getting to know Christopher, had a profound effect on my way of thinking. His insight and generosity have been invaluable to the rehearsal process.



Content Warnings for AGAINST:

There are references to high school shooting, rape and sexual assaults including a minor, racism, drug abuse, cancer, hostage scenario and gun shots.

Cast

Abdul-Malik Janneh



CHRIS

Bex Kealy



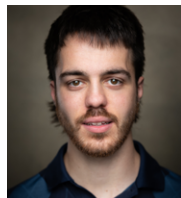
TOM'S MOTHER,
LAW ENFORCEMENT
OFFICER

Caleb O'Brien



TIM, MIDDLE
AGED MAN

Ethan Reid



LUKE

Hayley-Rose



WOMAN IN
AUDITORIUM,
MIDDLE
AGED WOMAN

Jack Reilly



TOM'S FATHER,
SHOOTER

Kiran Raywilliams



PROFESSOR OF
CREATIVE WRITING,
MANAGER

Lewis Shepherd



MELVYN

Liam Watson



DEAN OF SOCIAL
SCIENCES, DAN

Lottie Bell



KATE,
LUKE'S MOTHER

Moyeye Oke



TRACEY

**Óli Gunnar
Gunnarsson**



JON

Omolabake Jolaoso



ANNA

Sarah Tara Ray



SHEILA

Production Team

Production

Production Manager **Leah Yates**

Associate Production Manager **Megan Hartley**

Company Manager **Georgia N T Johnson**

Technical Manager **Daniel Holland**

Creative Team

Director **Hanna Berrigan**

Scenic & Costume Designer **Cecilia Trono**

Lighting Designer **Edgar Bermon**

Sound Designer **Ryan Perry**

Stage Management

Stage Manager **Lauryn Gibbon**

Deputy Stage Manager **Lucie Jennings**

Assistant Stage Manager **John Boswell**

Assistant Stage Manager **Ellie Holloway**

Scenic Arts Team

Scenic Manager **Alfie Thomas**

Scenic Manager **Charlene Francis**

Scenic Assistant **Holly Murphy**

Scenic Assistant **Stella Solari**

Lighting

Head of Lighting **Sam Blackmore**

Assistant Head of Lighting **Ella Welch**

Production Electrician **Toby Riding**

Lighting Programmer **Ella Welch**

Sound

Sound Operator **Tianna Taylor**

Costume

Costume Supervisor **Harry Dixon**

Costume Assistant **Bree Lloyd**

Costume Assistant **Jack Courtney**

Costume Maker **Anna Brown**

BSL Interpreter **Jacqui Beckford**

Special Thanks

Sparks Theatrical Hire for the lighting hire.

sparks
Theatrical Hire Ltd

Booking Details

Tickets cost **£7.60 each**

(Concessions available)

Book online at **tiny.cc/rbctickets**



Touch tours are available for visually impaired audience members, let us know if you would like one when booking your ticket.

